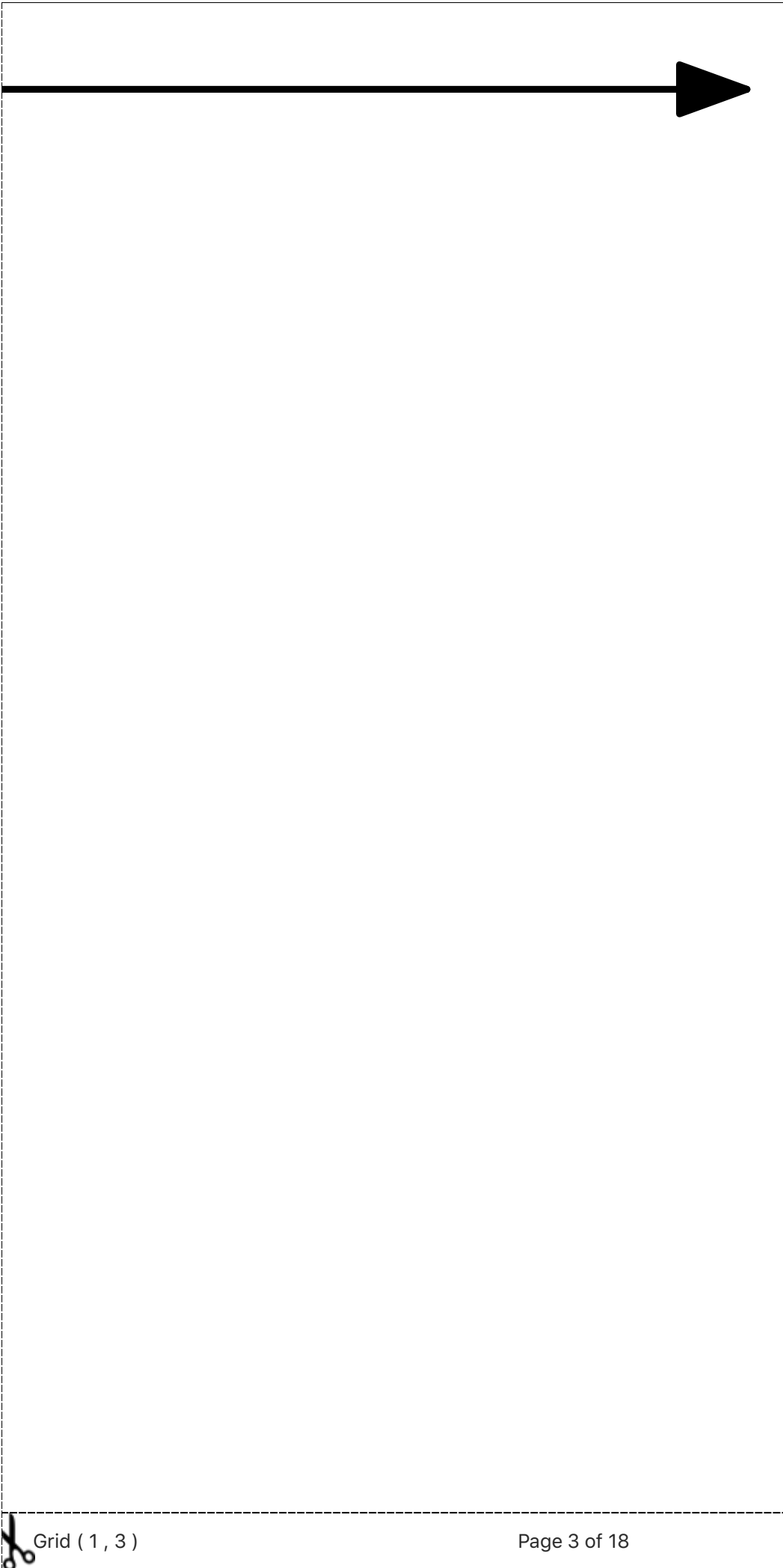


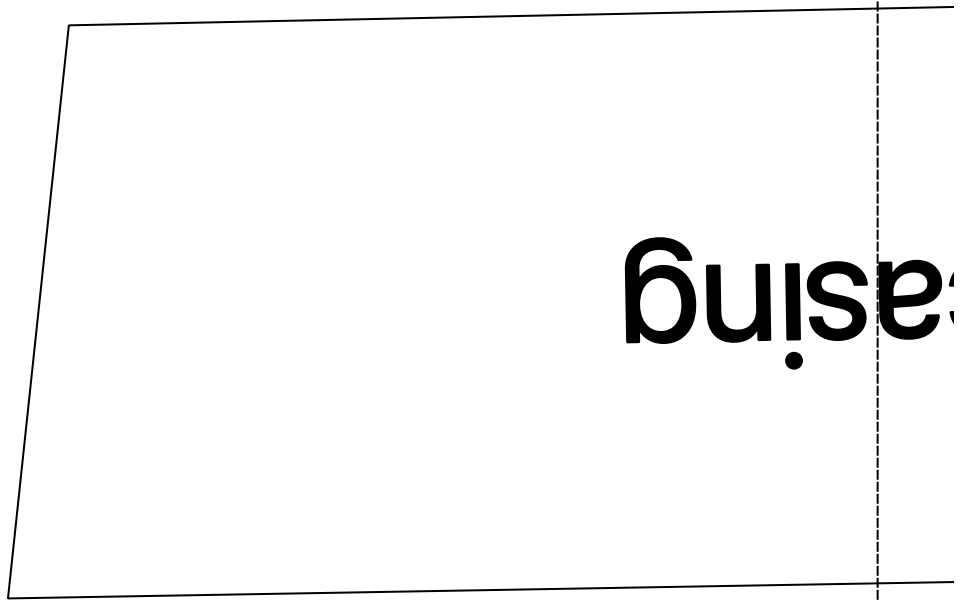
Sleeve Front
Attach to sleeve back
Cut Two
Lengthen 18"



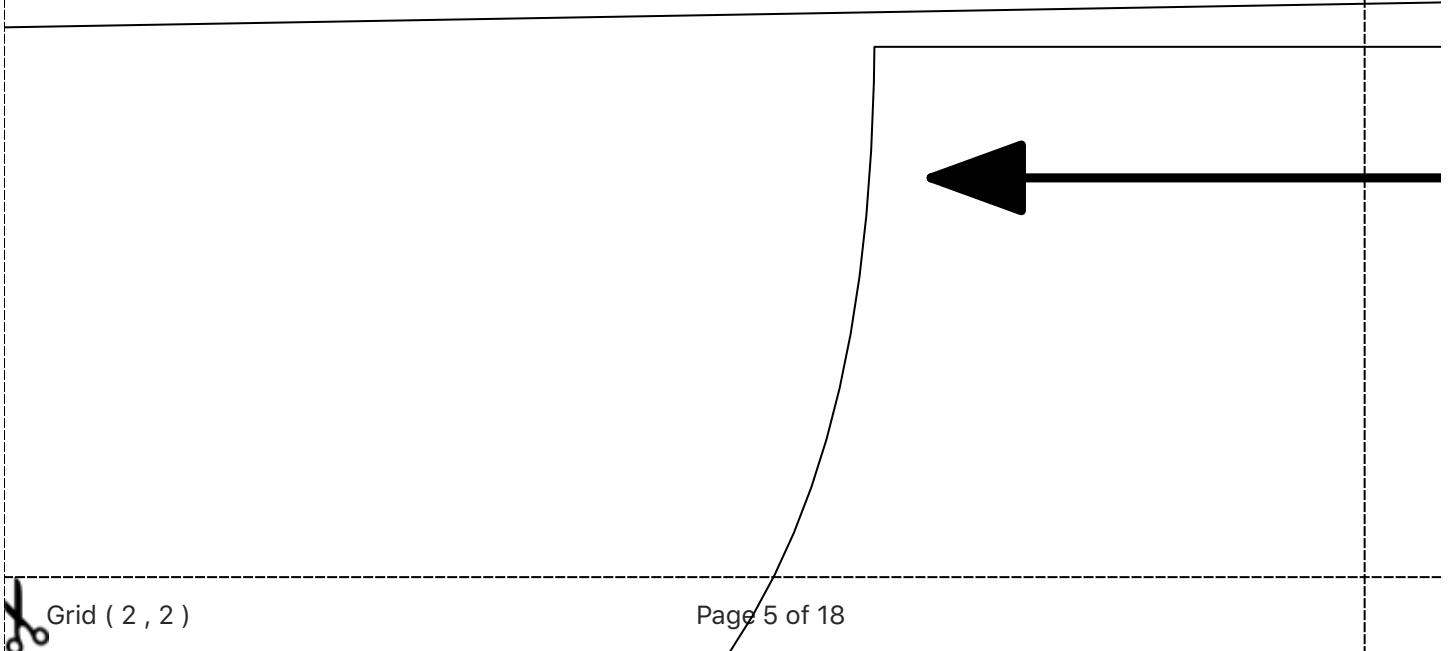
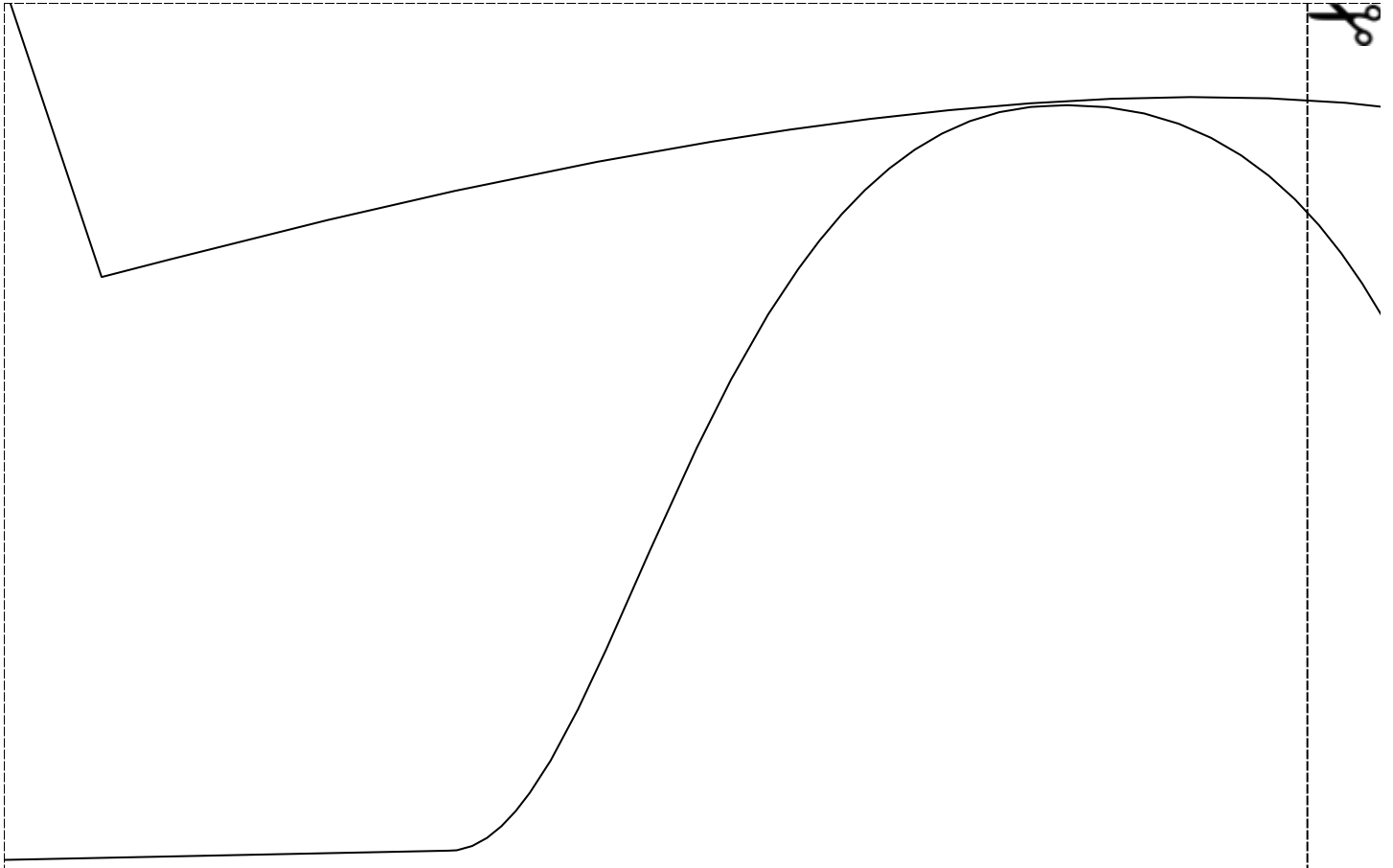
**Center Back
Cut on Fold
Lengthen 30"**

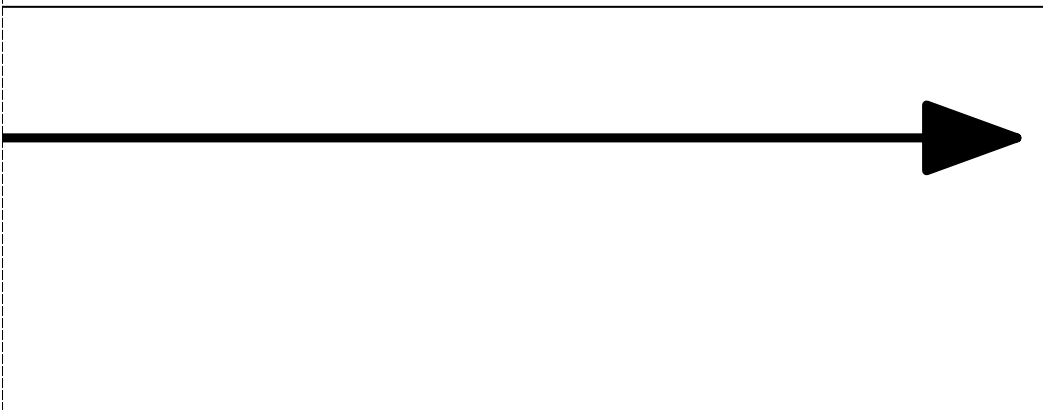
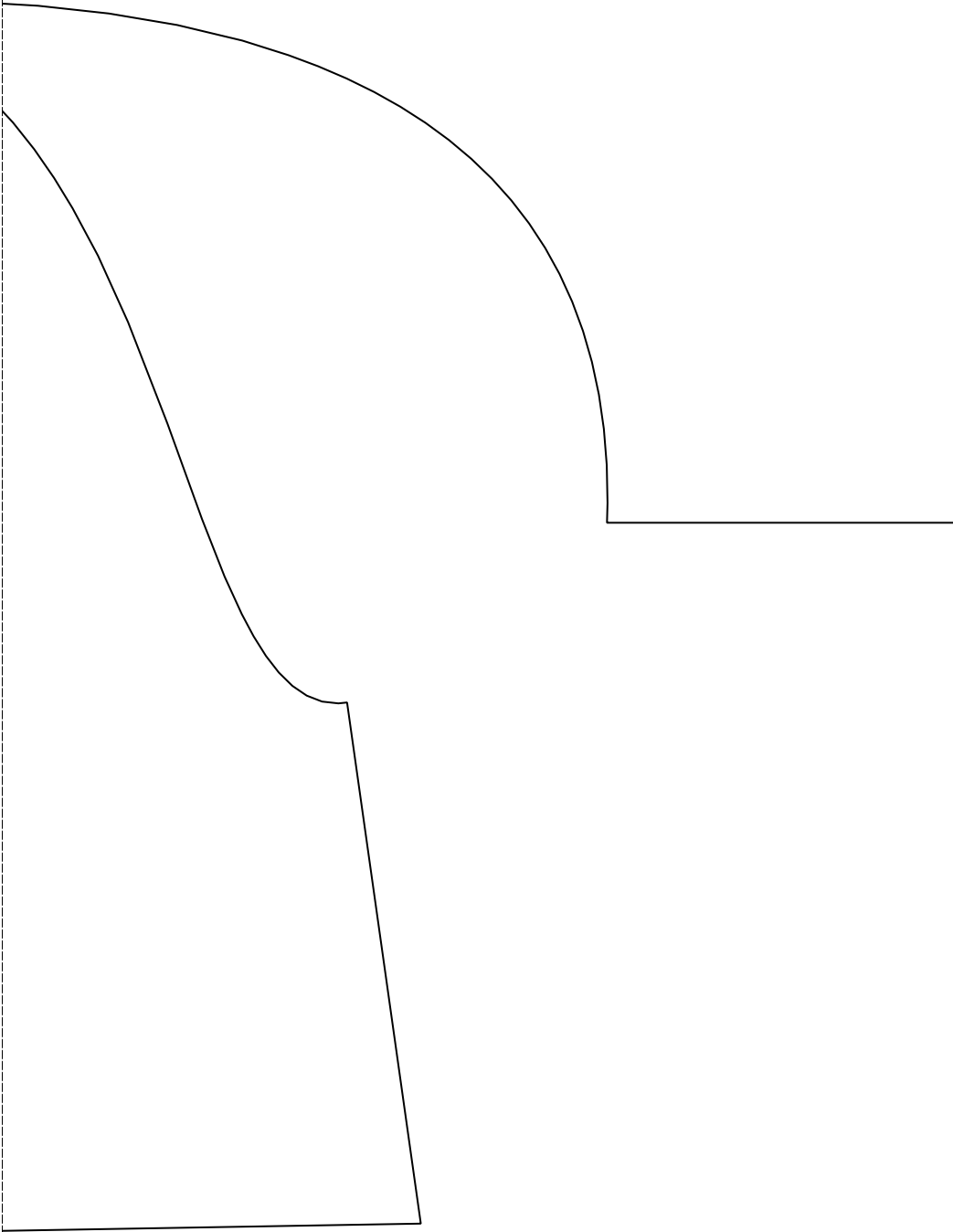


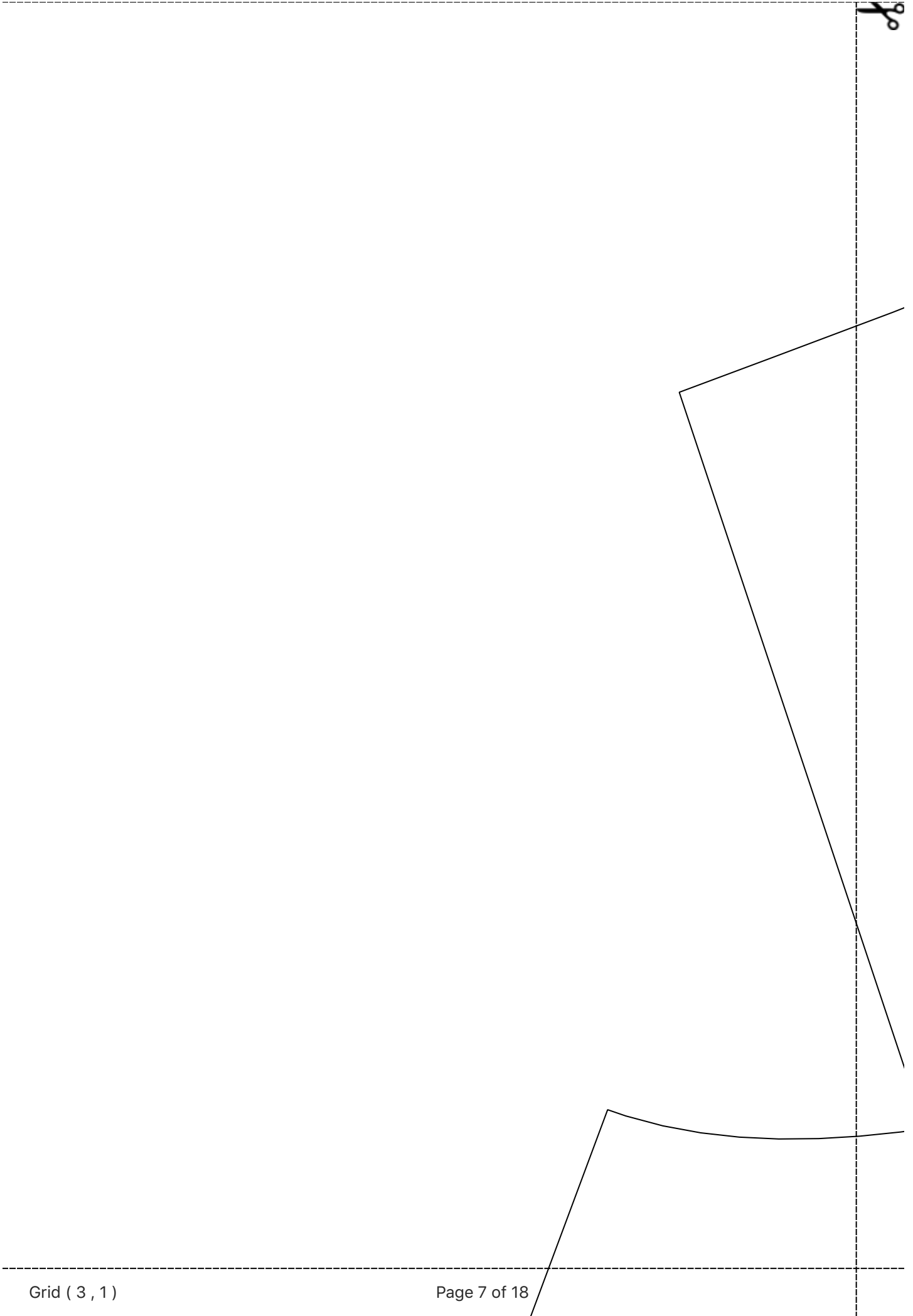




Optional cuff with ca







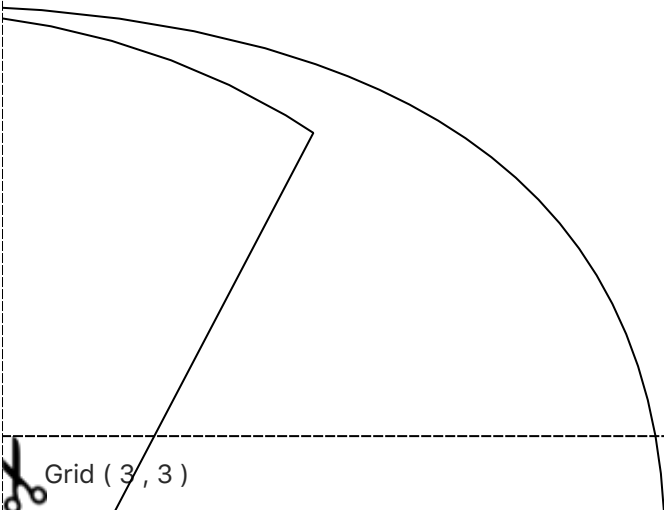
**Center Front
Cut on Fold
Lengthen 30"**

**Sleeve Back
Attach to Sleeve f
Cut**

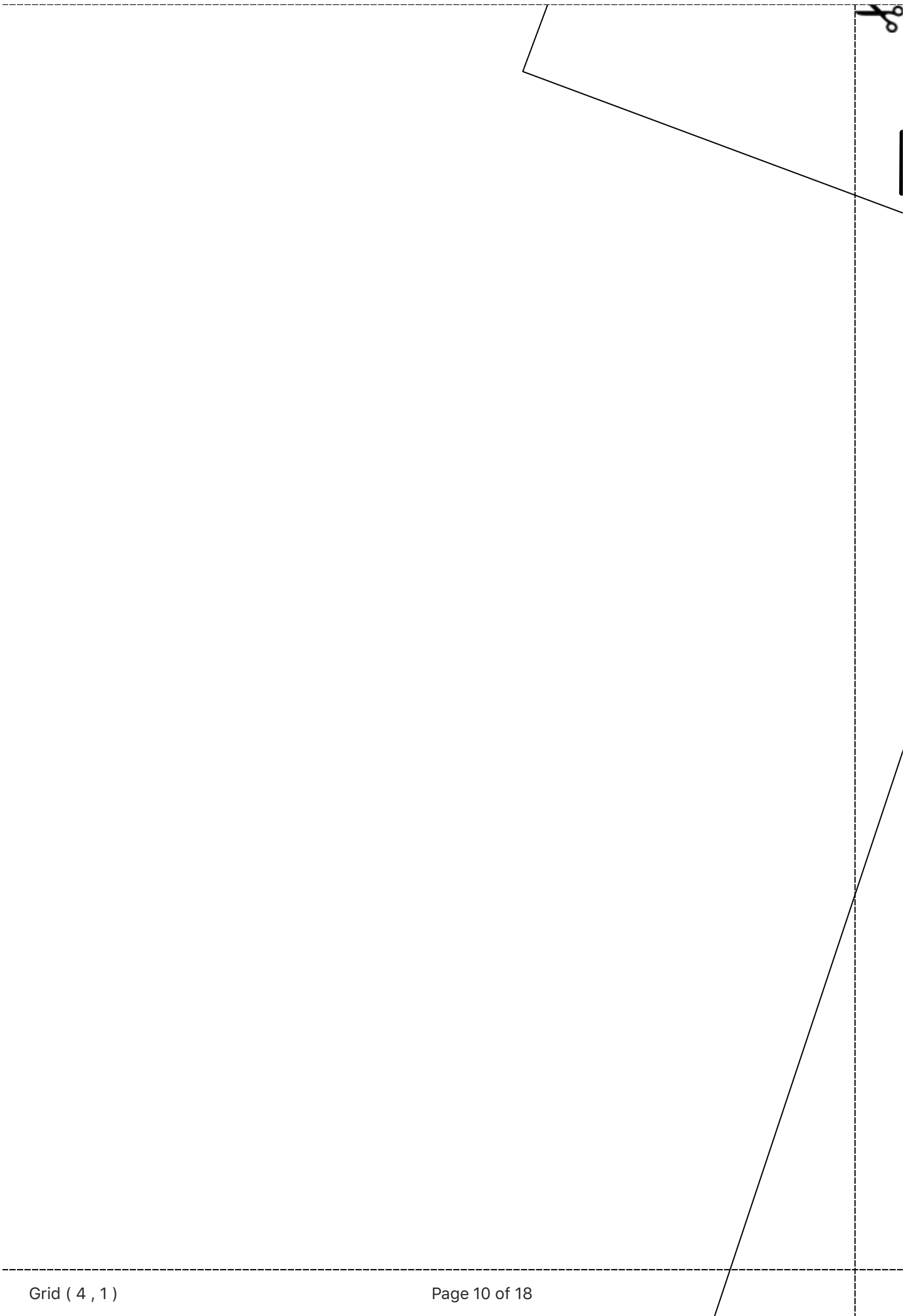


Grid (3 , 2)

Page 8 of 18



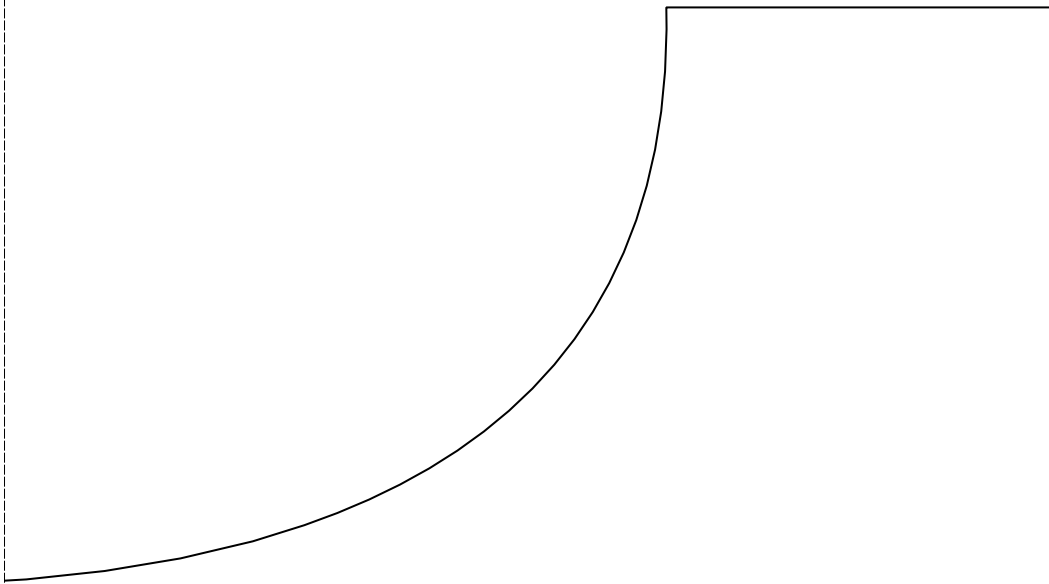
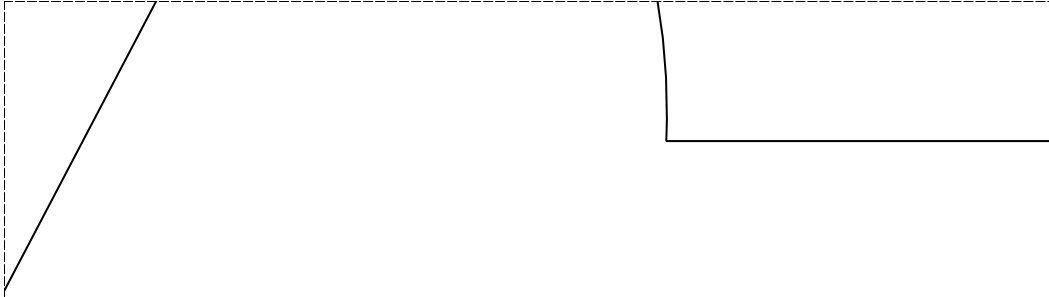
Grid (3 , 3)

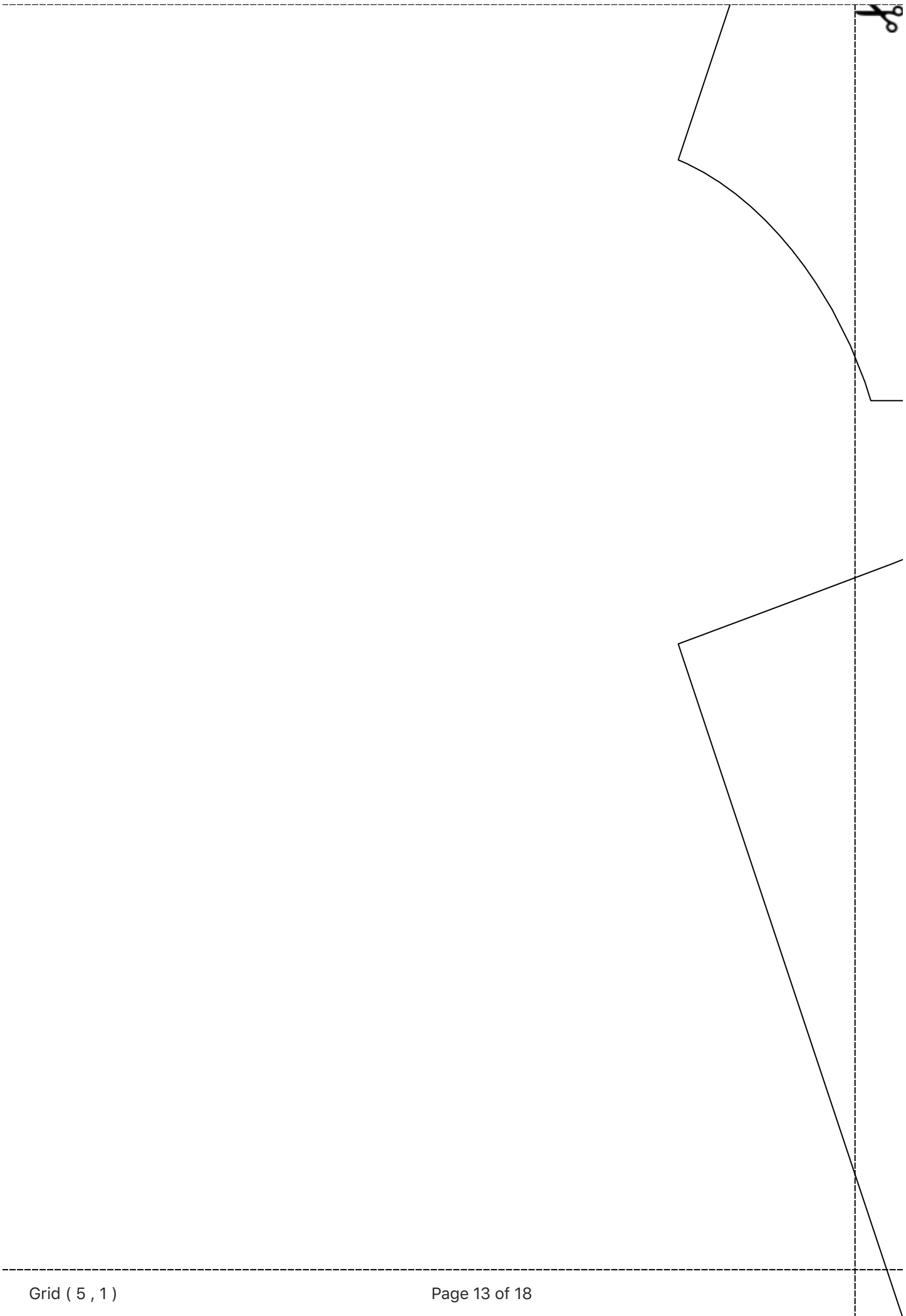


Sleeve front
Cut Two
Lengthen 18"



1/2" Overlap
one
in 30"







Left side Front Underlap
Cut one
Lengthen 30"

Left Side Back
Cut One
Lengthen 30"



